



# MIDPOINT OF THE PROJECT:

**HSE STEADY PROGRESS  
ON THE GLOBAL MARKET**

**MARCH 17, 2017**

PUBLICATIONS / CITATIONS

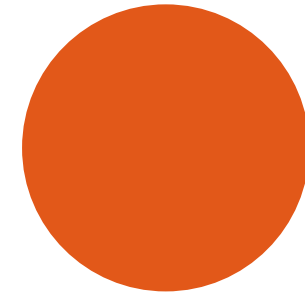
2013

2014

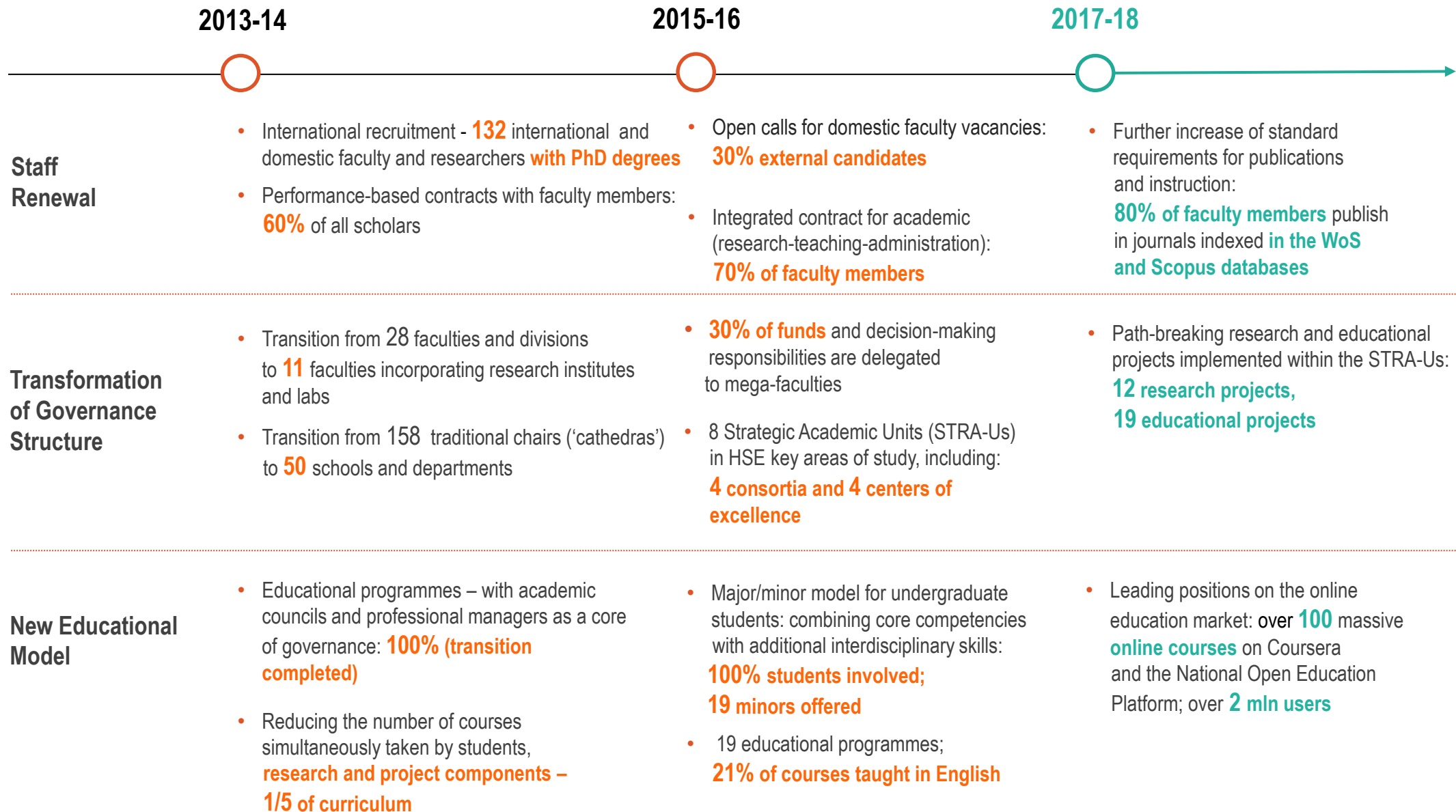
2015

2016

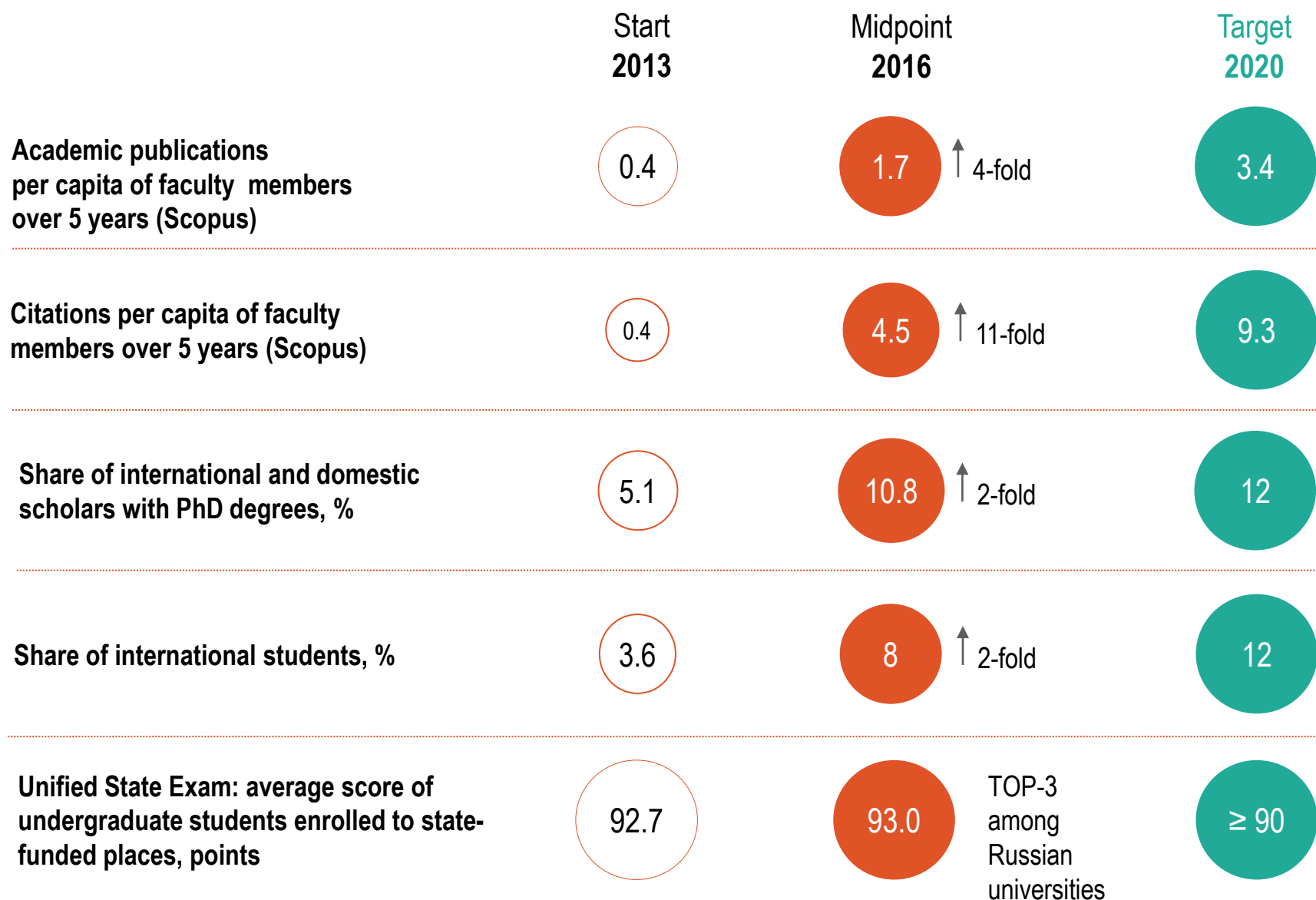
10 000  
8 000  
6 000  
4 000  
2 000



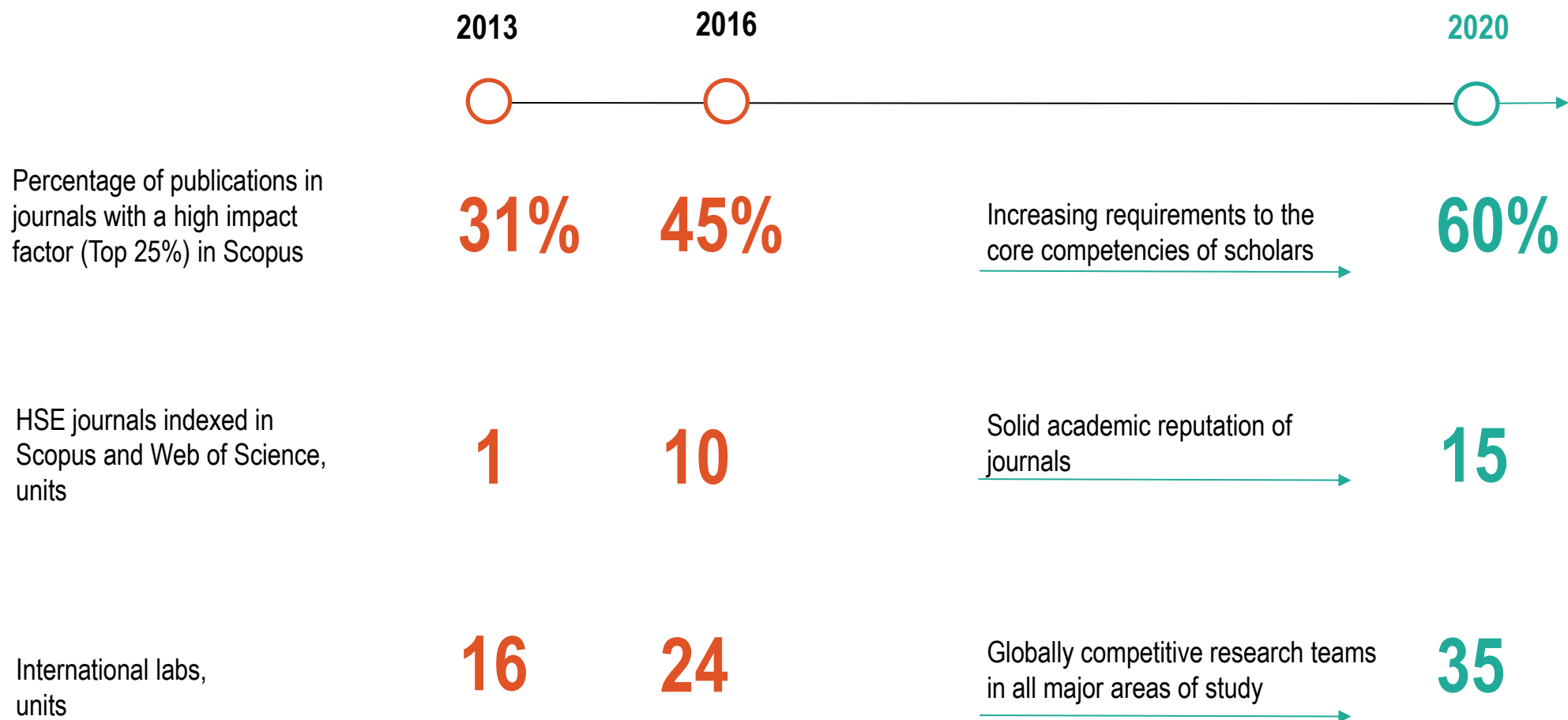
# HSE RADICAL TRANSFORMATION IN THE COURSE OF THE 5-100 PROJECT



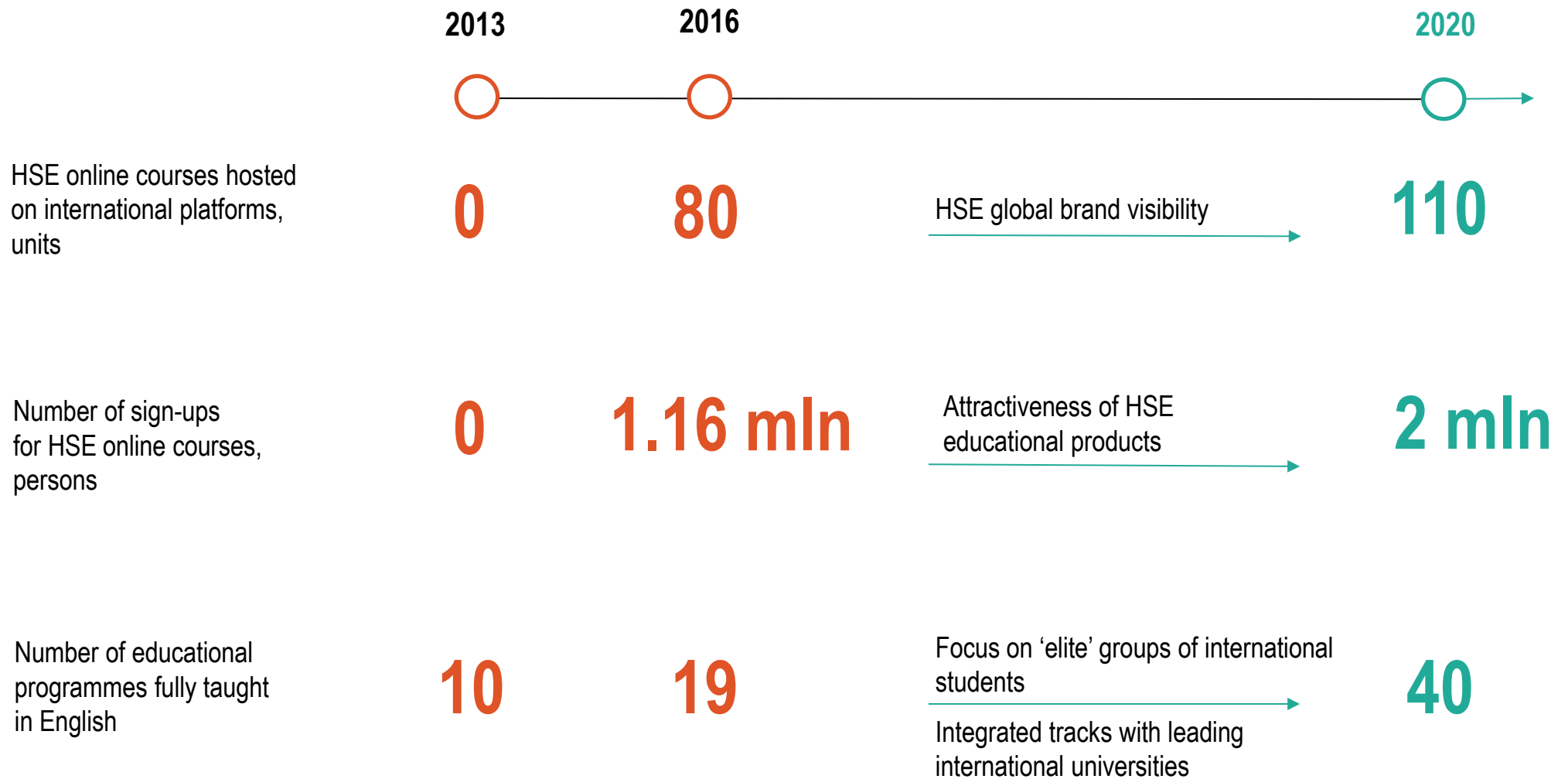
# RAPID GROWTH OF TARGET INDICATORS



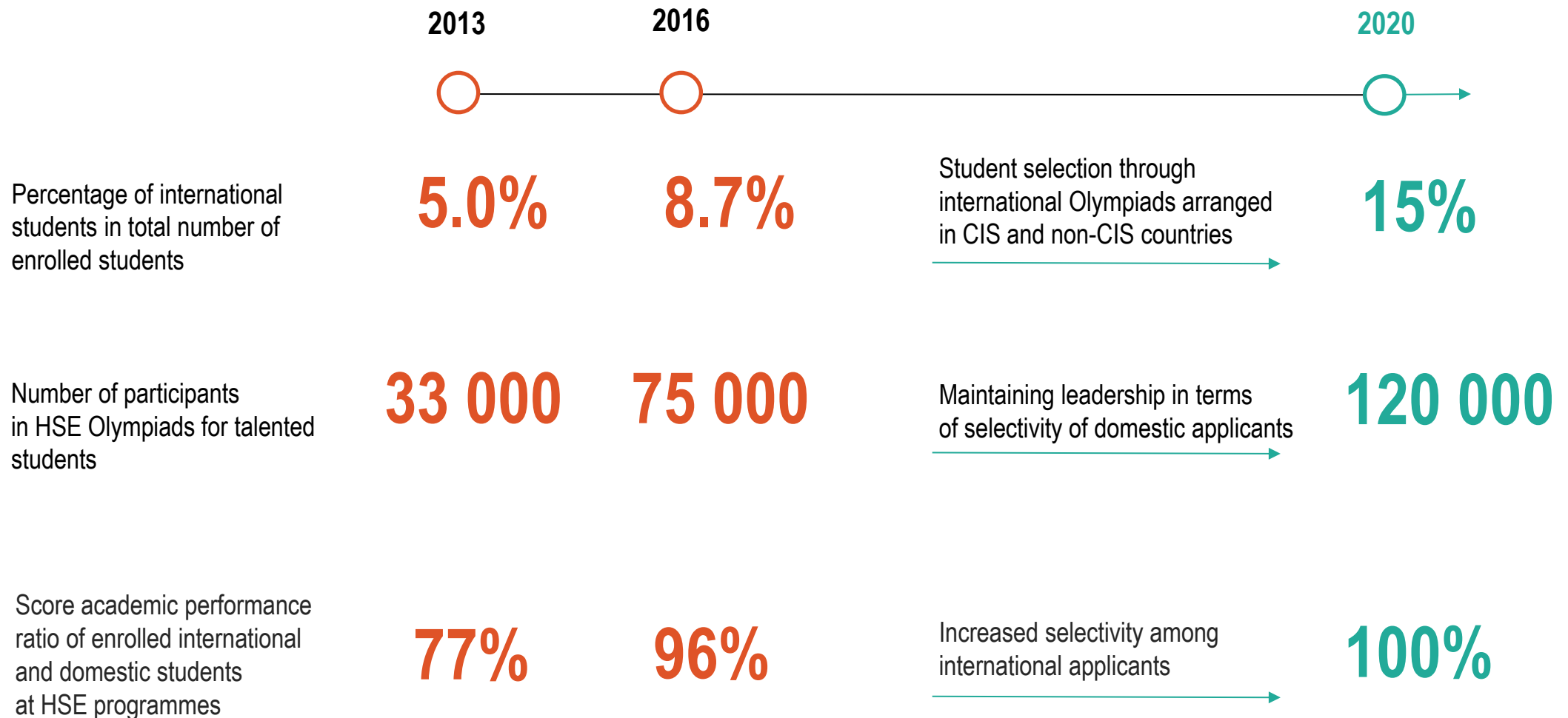
# INTEGRATING HSE RESEARCH WITH THE GLOBAL AGENDA



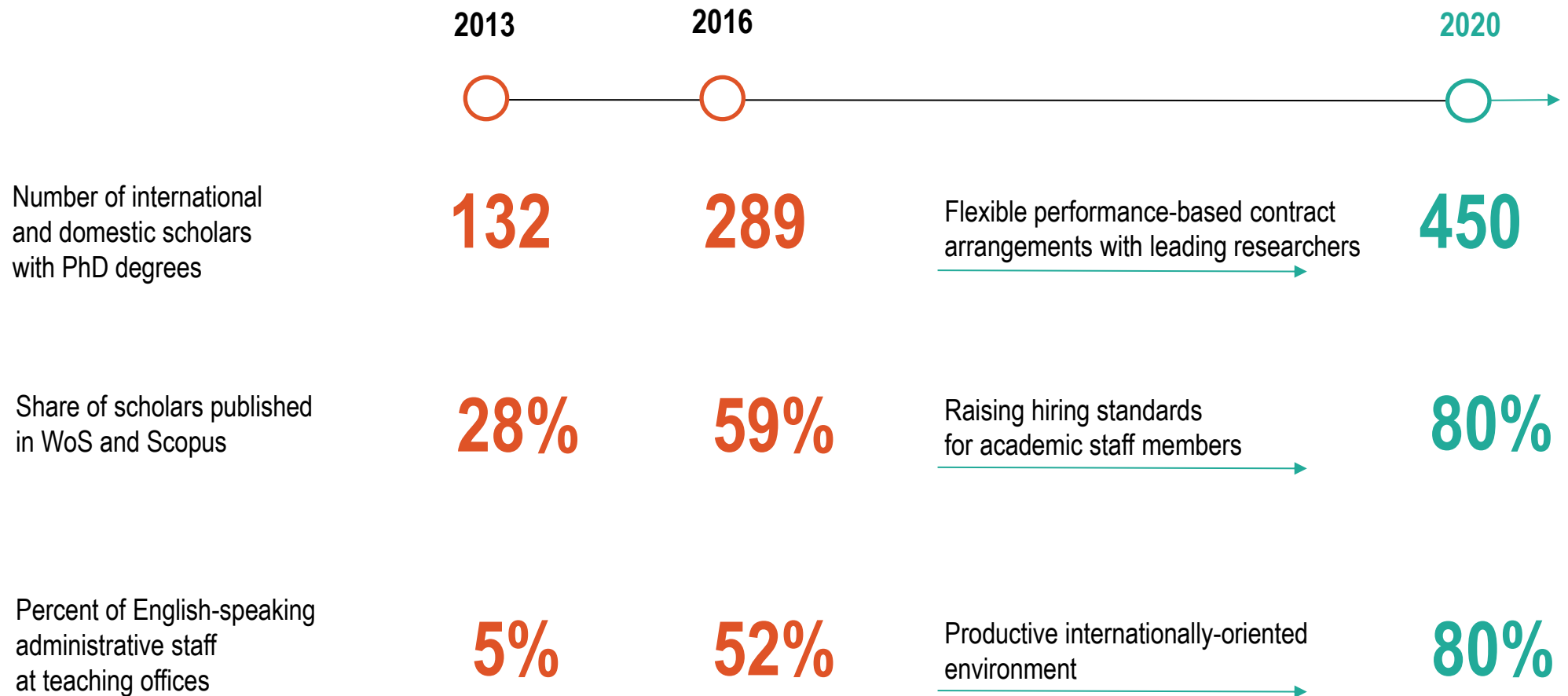
# GLOBAL EDUCATIONAL PRODUCTS



# ATTRACTING TALENTED STUDENTS



# NEW STAFF POLICY

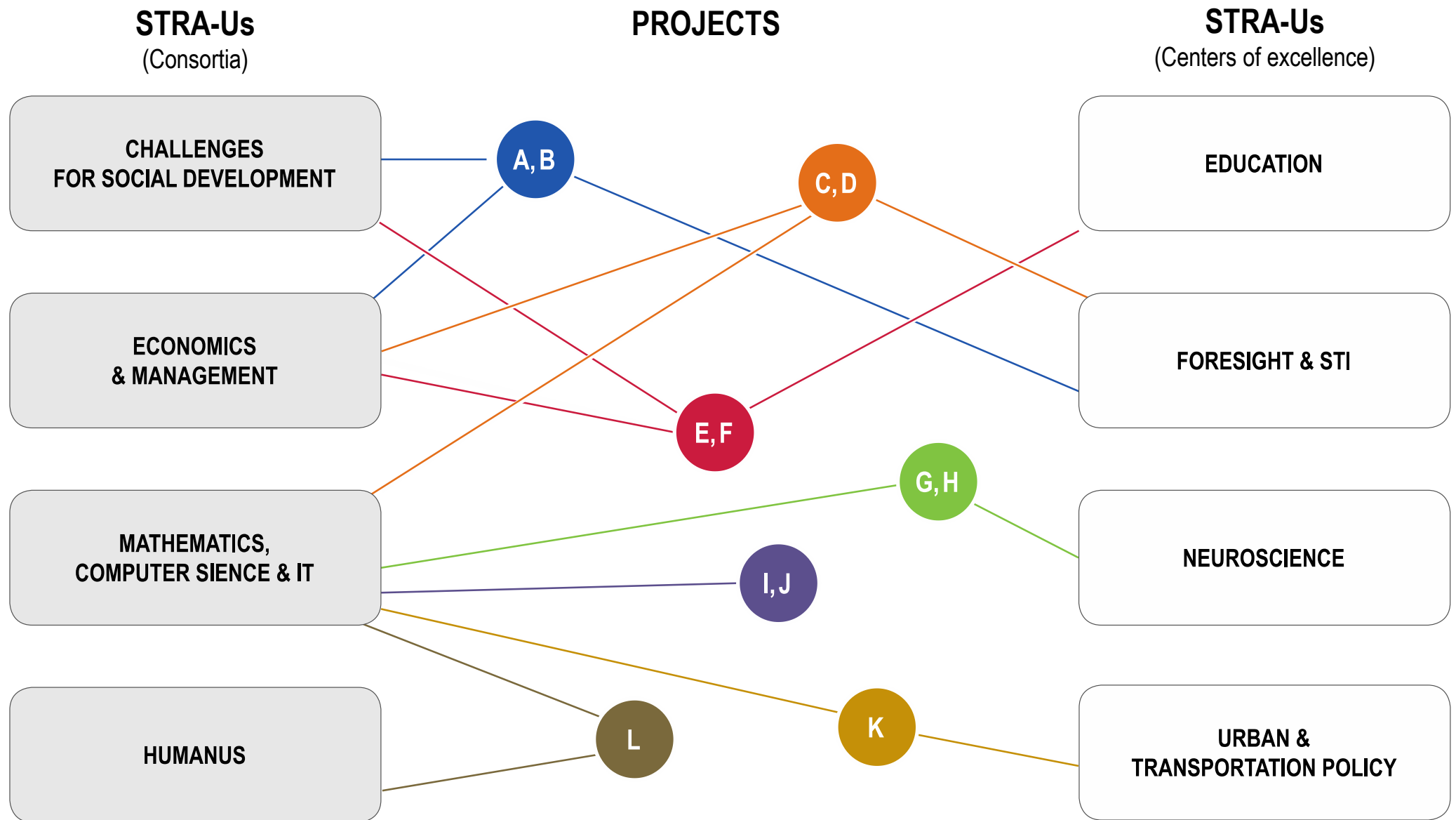


# PROGRESS IN INTERNATIONAL RANKINGS BY SUBJECT AND FACULTY

RANKING	SUBJECT/FACULTY	2015	2016	2017	
THE	Economics & Business		83	October 2017	
	Economics & Econometrics	151-200	101-150	51-100	
	Sociology	151-200	101-150	51-100	
	Politics & International Studies		101-150	51-100	
QS	Accounting & Finance		151-200	101-150	
	Philosophy	151-200	151-200	151-200	
	Business & Management Studies		151-200	151-200	
	Mathematics		251-300	151-200	
	History			151-200	
	Linguistics			151-200	
	Communication & Media Studies			151-200	
	Education			201-250	
	Law			201-250	
	Computer Science & Information Systems		401-500	351-400	
	Development Studies	51-100			
	<b>TOTAL SUBJECTS</b>		<b>4</b>	<b>9</b>	<b>13</b>



# STRA-Us COLLABORATE ON RESEARCH PROJECTS



# RESEARCH PROJECTS: EXAMPLES

## Trends in Science, Technology and Innovation

## Russian Longitude Monitoring Survey of the Economic and Health Status of Population

## Adaptive City Governance

### GOAL:

Identifying trends in STI development

Annual monitoring the quality of life of Russia's population

Developing a smart city environment

### PROJECTED RESULTS:

- Creating an information system for Big Data mining of STI trends
- Developing new methods for forecasting STI development

- Reliable and nationwide representative data on household trends since 1994
- Recommendations for social policy with a particular emphasis on inequality, poverty, consumption and health

- Incubator for smart city technologies
- Mechanisms for adaptive governance of social, transport and utilities infrastructure

### KEY PARTNERS:

- University of Manchester
- Georgia Institute of Technology
- Center for Strategic Studies and Management in Science, Technology and Innovation (Brazil)
- Institute of Information Transmission Problems of the Russian Academy of Sciences (RAS)

- University of North Carolina at Chapel Hill
- Ohio State University
- Institute of Sociology of the Russian Academy of Sciences (RAS)
- Federal Research Center for Nutrition, Biotechnology and Life Safety

- New York University
- Massachusetts Institute of Technology
- Institute for Advanced Architecture of Catalonia
- Uber
- Intel
- Yandex
- KROST Construction
- Gett
- Kuka